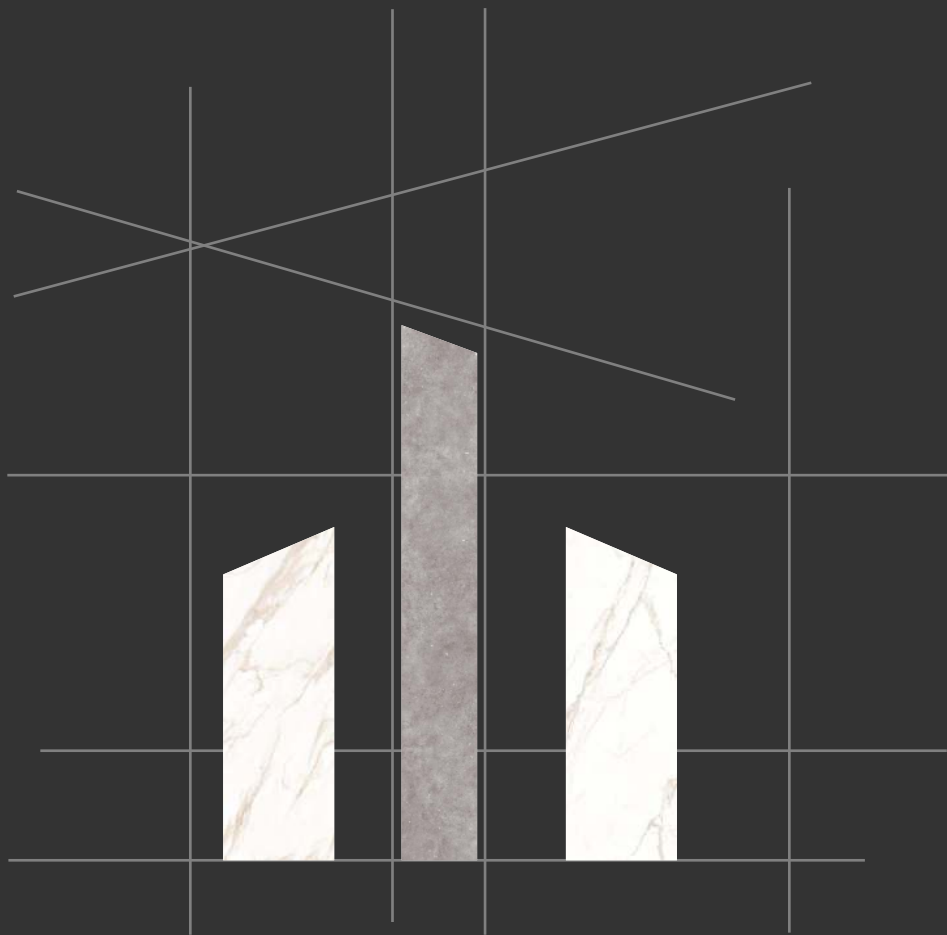


PROLAM



Inspired by origins,
defined by excellence

ABOUT US

Welcome to ProLam, a leading ceramic tile company located in Central Asia. Our mission is to provide our customers with the highest quality ceramic tiles from around the world, while also striving to be at the forefront of innovation and technology in the industry.

At ProLam, we believe that our commitment to using the latest technology in our manufacturing processes sets us apart from our competitors. We work with trusted suppliers in India, Turkey, and Spain to source the finest raw materials and produce top-quality ceramic tiles.

We are proud to be a global company, selling our products to three different continents. This has allowed us to gain valuable insights into the unique preferences of customers in different regions, and we use this knowledge to create products that meet their specific needs.

We are also committed to being environmentally responsible. We understand the importance of preserving the natural world, which is why we take great care to ensure that our manufacturing processes are as eco-friendly as possible.

At ProLam, we are more than just a ceramic tile company. We are a team of passionate individuals who are dedicated to providing our customers with exceptional products and services. We believe that our commitment to innovation, technology, and the environment sets us apart from the competition, and we look forward to the opportunity to work with you.

COMPANY DETAILS

WE OFFER:

- A WIDE RANGE OF FACADE MATERIALS AND ACCESSORIES, FROM SIMPLE TO THE MOST EXCLUSIVE ONES;
- DELIVERY OF MATERIALS TO THE CONSTRUCTION SITE
- SUPERVISION OF INSTALLATION WORKS;
- PRODUCT QUALITY ASSURANCE.
- LARGE-FORMAT PANELS OF ULTRA-THIN, LIGHTWEIGHT, FLEXIBLE, MESH-REINFORCED PORCELAIN STONEWARE
- LARGE FORMAT FIBER CEMENT PANELS
- CLINKER TILES
- TERRACOTTA FACADE PANELS

- INNOVATIVE CURTAIN WALL SYSTEMS
- FASTENERS
- LARGE FORMAT CERAMIC TILES
- STATE OF THE ART INTERIOR SOLUTIONS
- CUSTOM MADE FURNITURE
- LARGE FORMAT PANELS FOR INTERIOR FINISHING AND ETC.



IS THE EXCLUSIVE DISTRIBUTOR OF PRODUCTS OF TOP MANUFACTURERS AND LEADERS IN THE FIELD OF EXTERIOR AND INTERIOR FINISHING MATERIALS AT AFFORDABLE PRICES.

OUR TRAINING CENTER



The Ministry of Education and PROLAM plan to develop joint educational programs that cover the entire cycle of production, which will ensure the continuity of training of potential jobseekers.

In addition to the education and training of new personnel, the training center will also host events for professionals in the construction and architecture industry:

The creation of the training center will also serve as a "springboard" for implementing smart technologies in the educational process.



TRAINING



**PROFESSIONAL
DEVELOPMENT**



SEMINARS

KEY FIGURES

2015

YEAR OF
FOUNDATION

78

EMPLOYEES

5

COUNTRIES

600,000M²

YEAR OF
FOUNDATION

>100

COMPLETED
PROJECTS

>20

PARTNERS

DESIGN AND ENGINEERING OF HINGED VENTILATED FACADES

**FACADE
ENGINEERING**

**FACADE
CONSULTING**

**FACADE
DESIGN**

An essential part of the building design is the facade. A lot depends on its appearance and technical properties: the indoor climate, the rationality, profitability of investments, the daily comfort of operation, the aesthetic pleasure of the result.

IS A PRODUCER OF VENTILATED FACADES!

We have the best qualitative indicators in the branch, thanks to our own production under the supervision of engineers with great experience and the cooperation with architects, universities, and real estate developers.

Our expertise in the manufacture of ventilated facades allows us to train dozens of students who, in turn, bring new ideas for optimizing our facades. They come up with new ideas for optimization, production, and design. Every day we improve our facades, we strive to make our brand recognizable and expand the boundaries of PROLAM.

12 REASONS TO CHOOSE A VENTILATED FACADE

**VENTILATED FACADE ALLOWS TO CREATE A UNIQUE DESIGN FOR ANY FACILITY
AND EMPHASIZE THE ARCHITECTURAL ADVANTAGES OF THE BUILDING!**

EASY TO INSTALL AND REPAIR

Reconstruction of the building facade is made in a short time. As a result, you get a beautiful modern design. If needed the damaged panels can be replaced without dismantling much of the facade)

FROST RESISTANCE

Installation can be performed all year round regardless of weather conditions.

A WIDE RANGE OF FACADE PANELS AND INSTALLATION SYSTEMS

You can implement any idea and design, resulting in a presentable appearance of the building.

DURABILITY AND LONG LIFE

Depending on the type of cladding material, ventilated facades do not require repair up to 50 years. As a result, you save money on the maintenance of the building.

INSULATION CAPABILITY

Heat loss and heating costs are significantly reduced during the winter season.

THERMAL INSULATION

The technology helps to protect the building from overheating and overcooling.

SOUNDPROOFING

Our facade systems improve sound insulation by more than 2 times.

RESISTANCE TO AGGRESSIVE WEATHER FACTORS

A comfortable microclimate is created inside the premises. The service life of the building is prolonged.

MOISTURE RESISTANCE

Reliable protection against moisture eliminates the destruction and deformation of the walls.

ALTERNATIVE TO HVAC

The air spaces between the facade and the walls create a favorable microclimate, eliminating the need for ventilation.

INSTALLATION ON UNEVEN WALLS

There is no need to tear out the walls before installing the system. Any irregularities and defects are effectively hidden under the ventilated facades.

VERSATILITY

The systems are used to create facades of any building irrespective of its shape, height, purpose and conditions of use.

OUR SERVICE

DESIGN AND LAYOUT OF THE HINGED VENTILATED FACADE SYSTEMS



detailed drawings, site plans, and construction with installation diagrams;



specifications of materials, elements of the structure and nodes of the facade system;



calculations of bearing capacity and fire resistance of walls;



explanatory notes to all drawings;



recommendations for the installation of the facade;



visualization of the final appearance

WE WORK WITH GLOBAL LEADERS

Our installation systems allow to mount any facade materials on any surface. Our facade systems can be installed on the entire surface of the building or on its individual sections and elements.

1 PROLAM

2 IA HPL PANEL

3 IA CEMENT

4 ARGOS

5 TOPAZ

6 ARTSTONE

7 FRONTEK



THE ADVANTAGES OF OUR MATERIALS

Our installation systems allow to mount any facade materials on any surface. Our facade systems can be installed on the entire surface of the building or on its individual sections and elements.

100% SAFE



Installation all year round
Frost resistance
UV resistance
Fire resistance
Seismic resistance
Wind resistance



Versatility
Durability
Easy installation
Height
Comfortable exploitation



Aesthetics
Eco-friendliness
Rich range of colors
Impact resistance
Flexibility

PROLAM PROVIDES

Our installation systems allow to mount any facade materials on any surface. Our facade systems can be installed on the entire surface of the building or on its individual sections and elements.



Regular range updates



High safety standards



Affordable prices



Compliance with contract terms and conditions



use of the new technology



Individual approach to each client



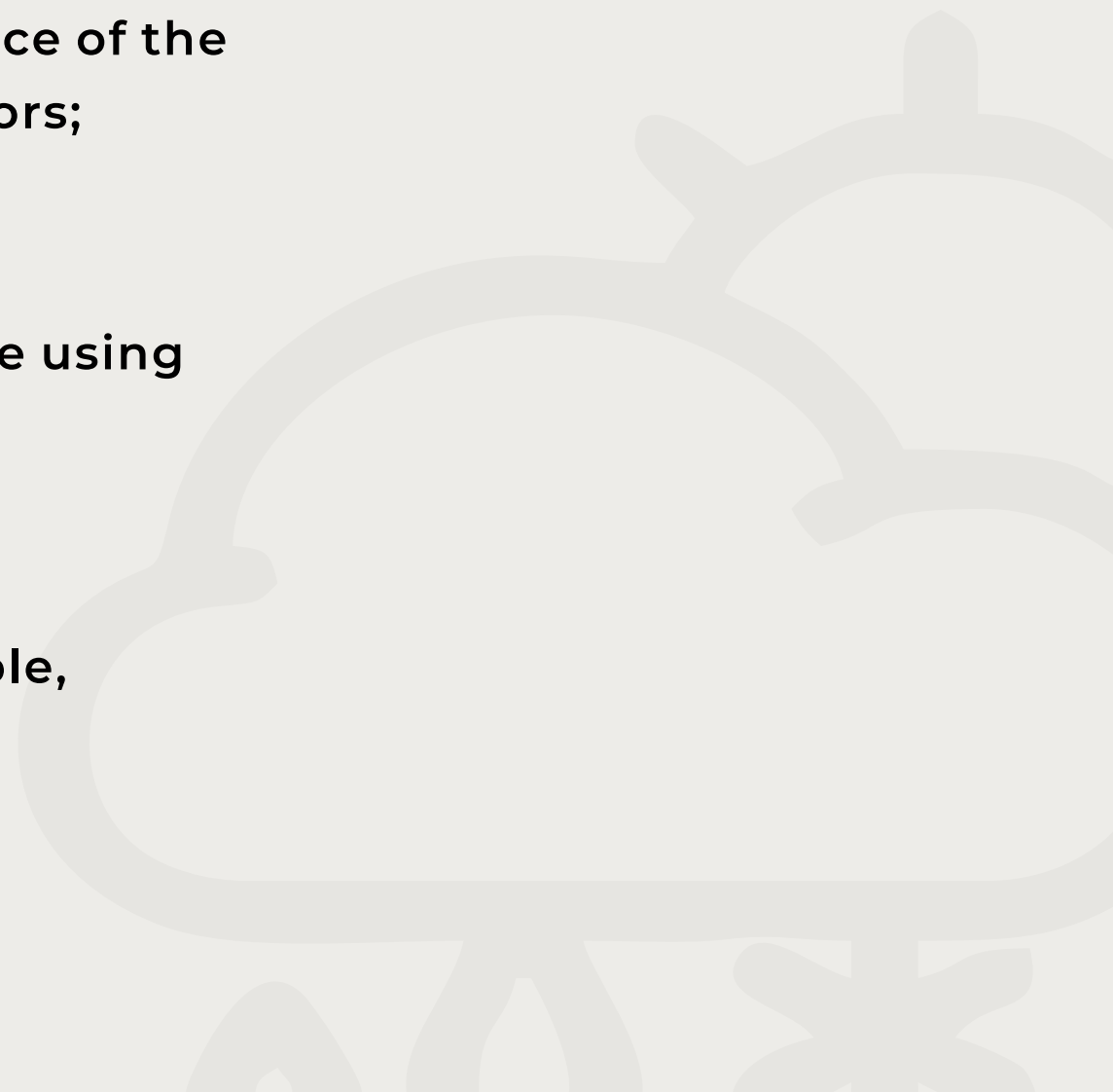
Timely delivery



Support specialists

HINGED VENTILATED FACADE

Our facade systems can be installed on the entire surface of the building or on its individual sections and elements.

- 1.** Our vertical-horizontal framing system is more reliable compared to vertical systems;
 - 2.** Any system has the ability to mount in two ways: the entire surface of the wall (lightweight system) and exclusively in the intermediate floors;
 - 3.** Interfloor installation allows you to mount facade in places where using other systems is not possible;
 - 4.** Professional engineering support makes our systems safe, durable, and easy to install.
- 

INNOVATIVE PROJECT COMPANY LLP

Innovative Project Company was created for providing facade and interior material with professional technical support.

The customer receives material with complete installation instructions, that are developed individually for each project.



FULL PACKAGE OF DESIGN DOCUMENTATION WITH LOAD CALCULATIONS:

- weight
- wind
- inertia
- installation systems
- area seismicity
- guarantee of cyclicity of the hinged facade system

1. We believe in information modeling of buildings, multi-optional elaboration of key technical solutions, optimization of the construction process and operation of buildings.

2. We strive for the best match of price/quality/reliability in our projects - we optimize every meter of the future facade.

3. We strive to ensure that all parties involved in the process benefit from the results of the company: the final owners of the apartments, developers, builders, government agencies, employees and founders of the company, facility management companies and others.

The presence of highly qualified specialists allow us to offer customers the most suitable solutions for each specific project, thereby ensuring impeccable quality of service and optimal timing

WHY CHOOSE US?

OUR MISSION

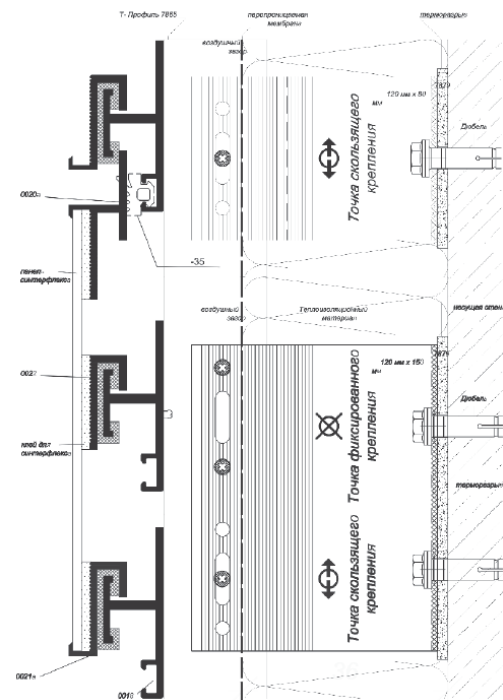
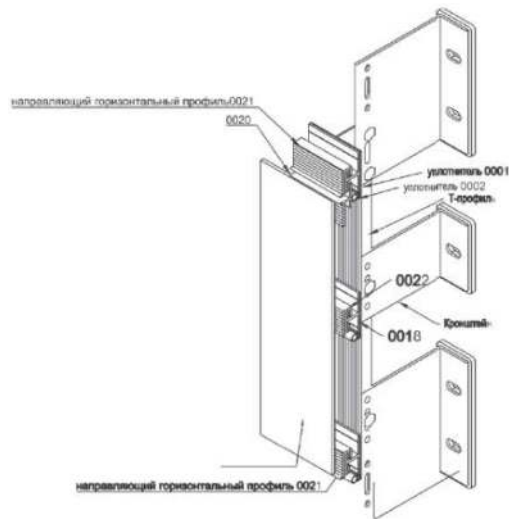
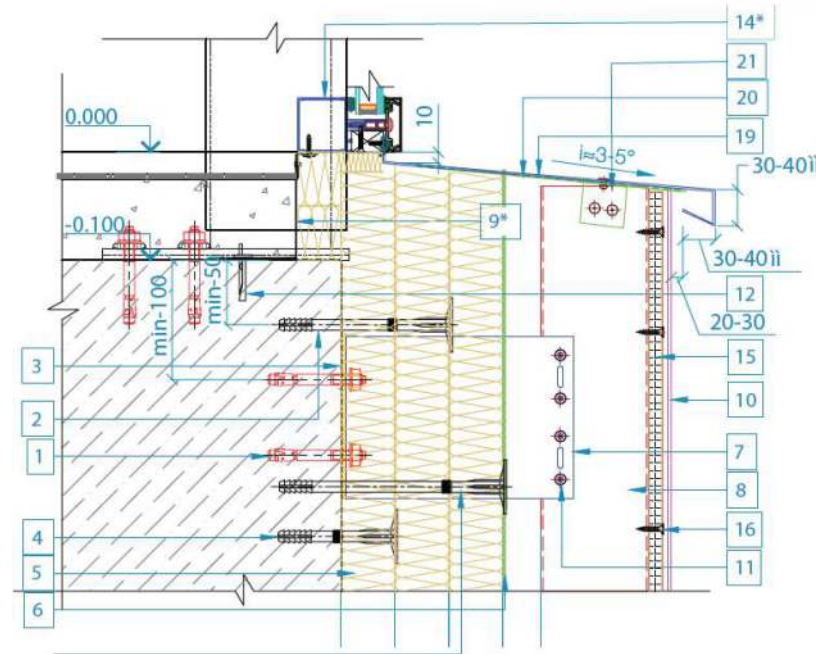
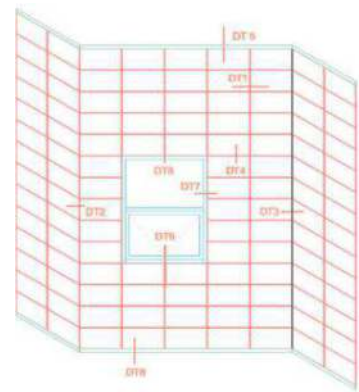
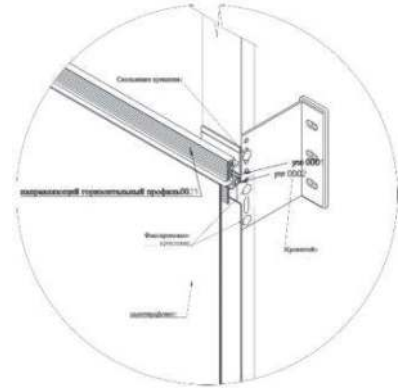
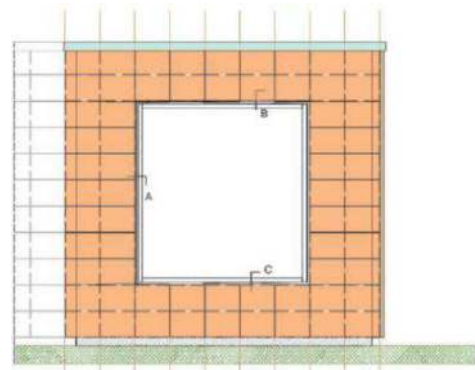
Development of projects that contribute to the creation of optimal infrastructure for people, using the best resources and ideas.

We make entrepreneurs' dreams come true, minimizing costs while maintaining functionality and quality.

- **Extensive portfolio of successful projects**
- **Comprehensive experience of specialists in different areas**
- **Maximum result at minimum cost**
- **Supervision of installation works and technical support**
- **Individual design and development of components**
- **3D model design**
- **Own design program**
- **Extensive library of design solutions**
- **In-house materials testing laboratory**



PROLAM FIXATION METHOD



Note:

- Dimensions are in millimeters

* - Shown symbolically

** - lay a sealing tape between dissimilar materials

	Name		
		10	PROLAM
1	Anchor bolt M10x90 Hilti or equivalent	11	Rivet 4,8x12 A2/A2
2	Belleville dowel Termoklip color black M 10x160	12	Wedge anchor 6x40 spacing 250-300mm
3	Thermal break	13	Termoklip dowel pin black color M 10x210
4	Bellet dowel Termoklip black color M 10x110 or analog	14	Stained glass unit, shown conditionally
5	Techernovent heat insulation 80kg/m3 $\geq 50\text{mm}+50\text{mm}$	15	Aqua panel
6	Moisture-windproof membrane Fibrizol NG black	16	Screw for fixing the aqua-panel
7	Supporting bracket L=210 mm KH-216/4-5(150)	19	Galvanized drip flashing
8	Profile guiding 152-231 100 mm	20	Noise absorbing tape
9	Fire cutoff min. $\geq 0.7\text{mm}$	21	Corner 170-207 40x40

Madera Natural



Madera Beige

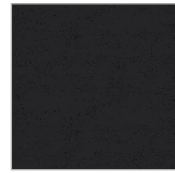


Madera Brown



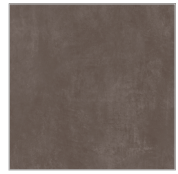
Madera Walnut

Nero Blend



Nero Blend

Concrete



Cemento Taupe



Cemento Grey

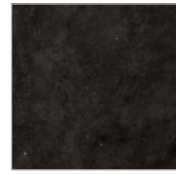


Cement Cemento

Emerald



Emerald Beige



Emerald Nero



Emerald Grey



Cement Antracide



Emerald Smoke

Basics



Plain White
60x120cm | 100x300cm



Cool Beige
60x120cm | 100x300cm



Dark Cobalt Blue
60x120cm | 100x300cm



Dark Grey
60x120cm | 100x300cm



Black
60x120cm | 100x300cm



Grey
60x120cm | 100x300cm



Ivory
60x120cm | 100x300cm



Olive
60x120cm | 100x300cm



Peach
60x120cm | 100x300cm



Sky
60x120cm | 100x300cm



Steelk
60x120cm | 100x300cm



Warm
60x120cm | 100x300cm



Soft Peach
60x120cm | 100x300cm



Elite White
60x120cm | 100x300cm

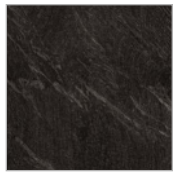


Black
60x120cm | 100x300cm

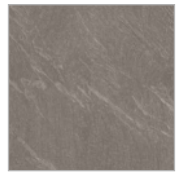
Salte



Salte Natural

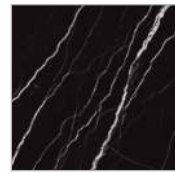


Salte Nero



Salte Grigio

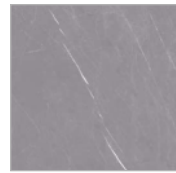
Marbles



Marble Dark



Midnight Black



Marble Grey



Salte Beige



Statuario White



Calacutta Borgini



Starlight



Flash White
60x120cm | 100x300cm



Golden Brown
60x120cm | 100x300cm



Lignin Black
60x120cm | 100x300cm



Moss Green
60x120cm | 100x300cm



Ocean Blue
60x120cm | 100x300cm

Highway



Highway Bone



Reed Green
60x120cm | 100x300cm



Rhino Grey
60x120cm | 100x300cm



Sandune Black
60x120cm | 100x300cm

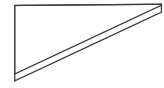


Silver Spring
60x120cm | 100x300cm



Steel Grey
60x120cm | 100x300cm

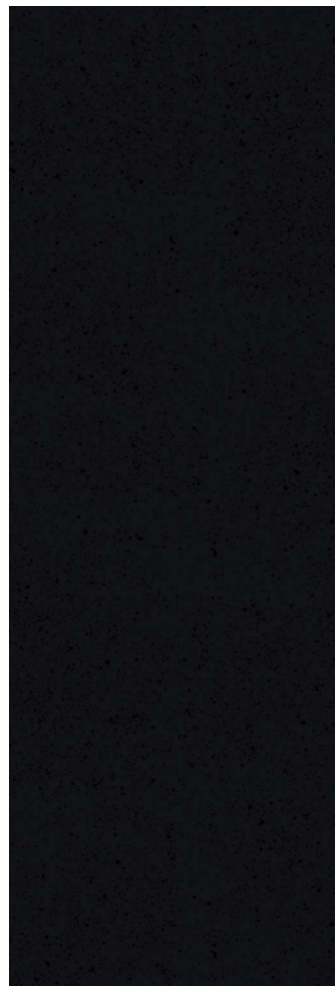
PROLAM



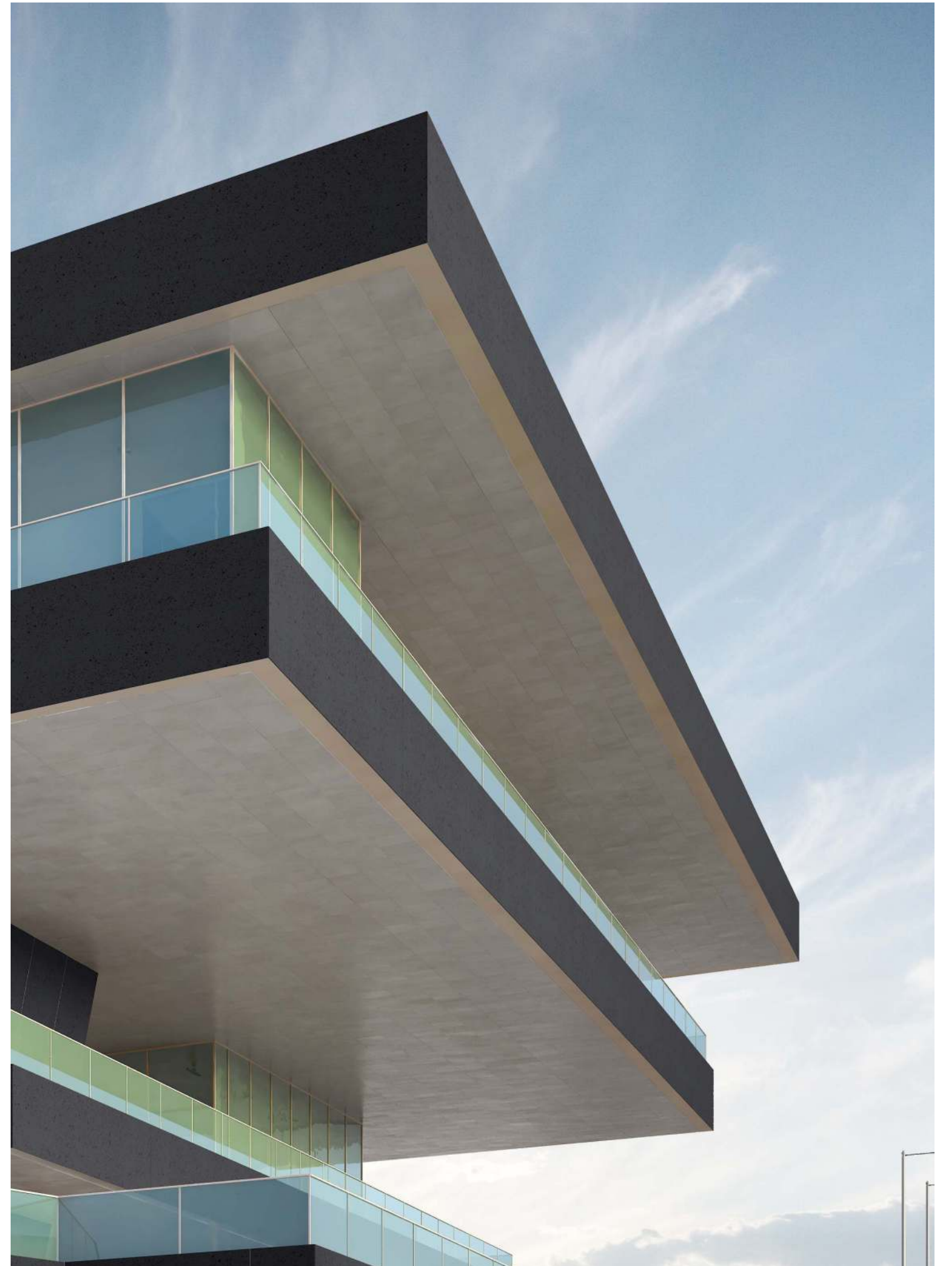
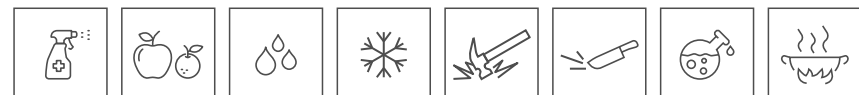
Thickness
05mm
Approx

**SURFACE
MATT**

PRODUCT USED

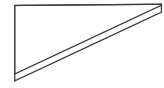


Black
100x300cm





PROLAM



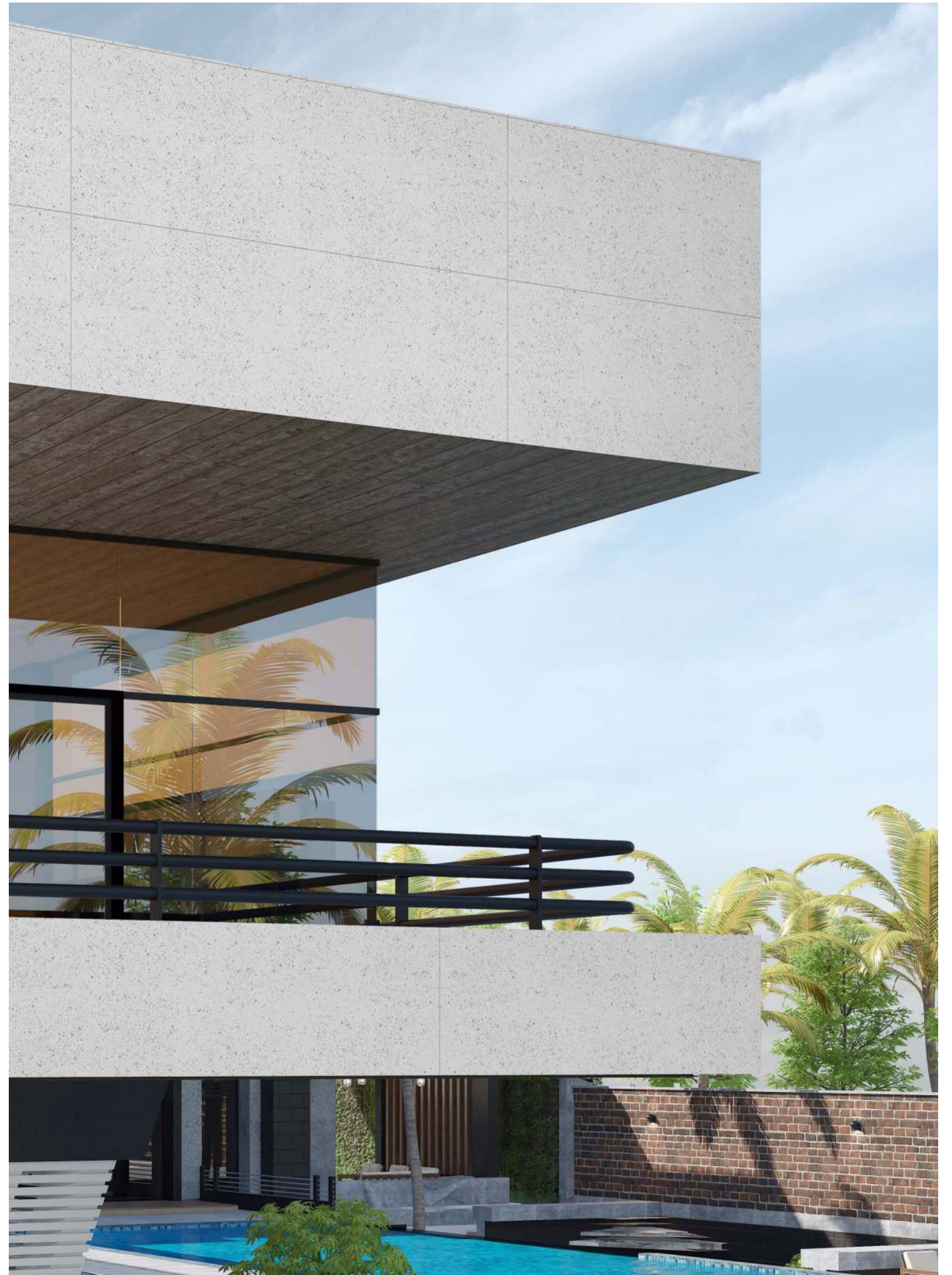
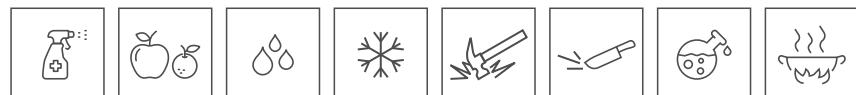
Thickness
05mm
Approx

**SURFACE
MATT**

PRODUCT USED



Flash White
100x300cm







Series : Madera

60x120cm |100x300cm

Digital Technology

HD Printing Quality



Madera Brown

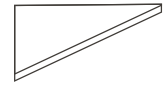


Madera Walnut



Madera Beige

PROLAM



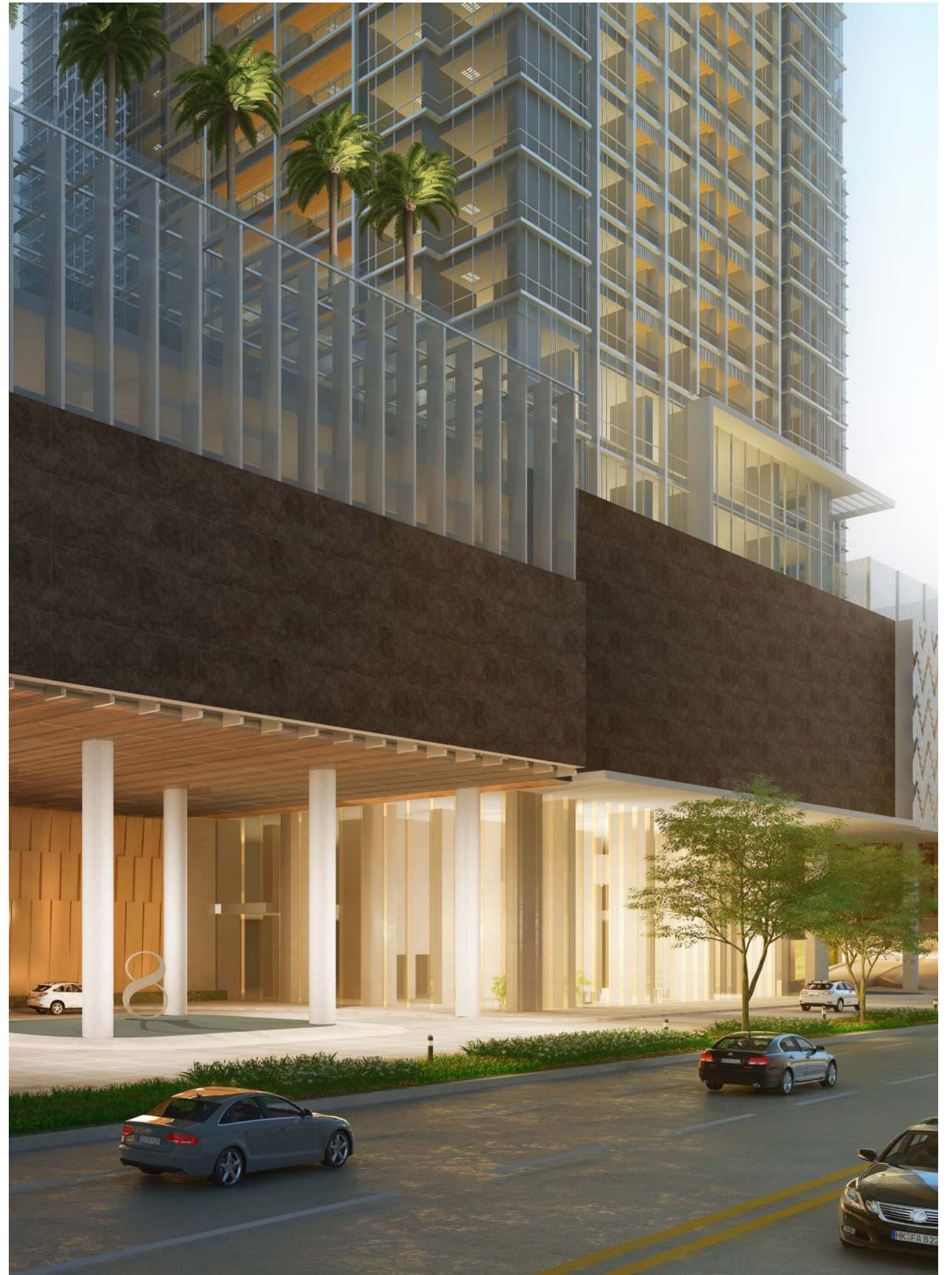
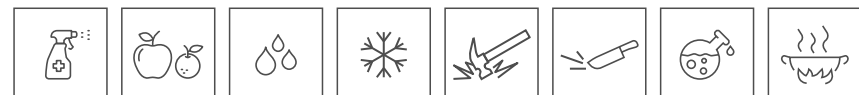
Thickness
05mm
Approx

SURFACE
MATT

PRODUCT USED

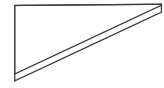


Emerald Nero
100x300cm





PROLAM



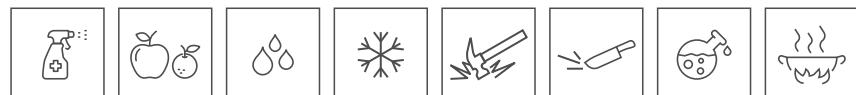
Thickness
05mm
Approx

SURFACE
MATT

PRODUCT USED



Emerald Smoke
100x300cm







Series : Emerald

60x120cm |100x300cm

Digital Technology

HD Printing Quality

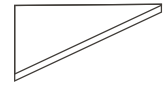


Emerald Beige



Emerald Grey

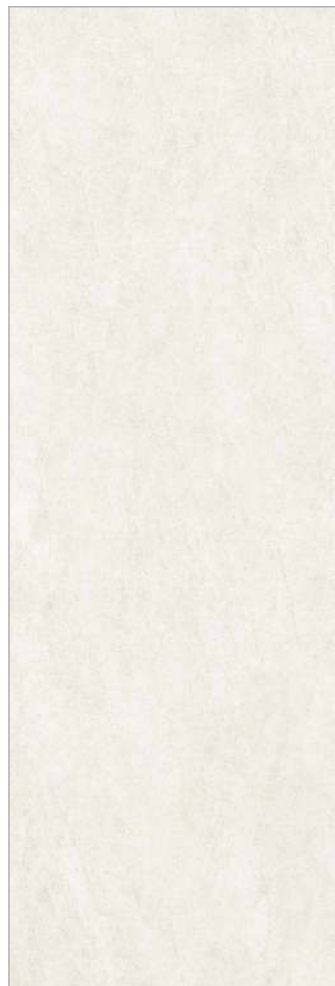
PROLAM



Thickness
05mm
Approx

**SURFACE
MATT**

PRODUCT USED

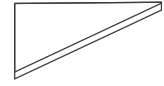


Highway Bone
100x300cm





PROLAM



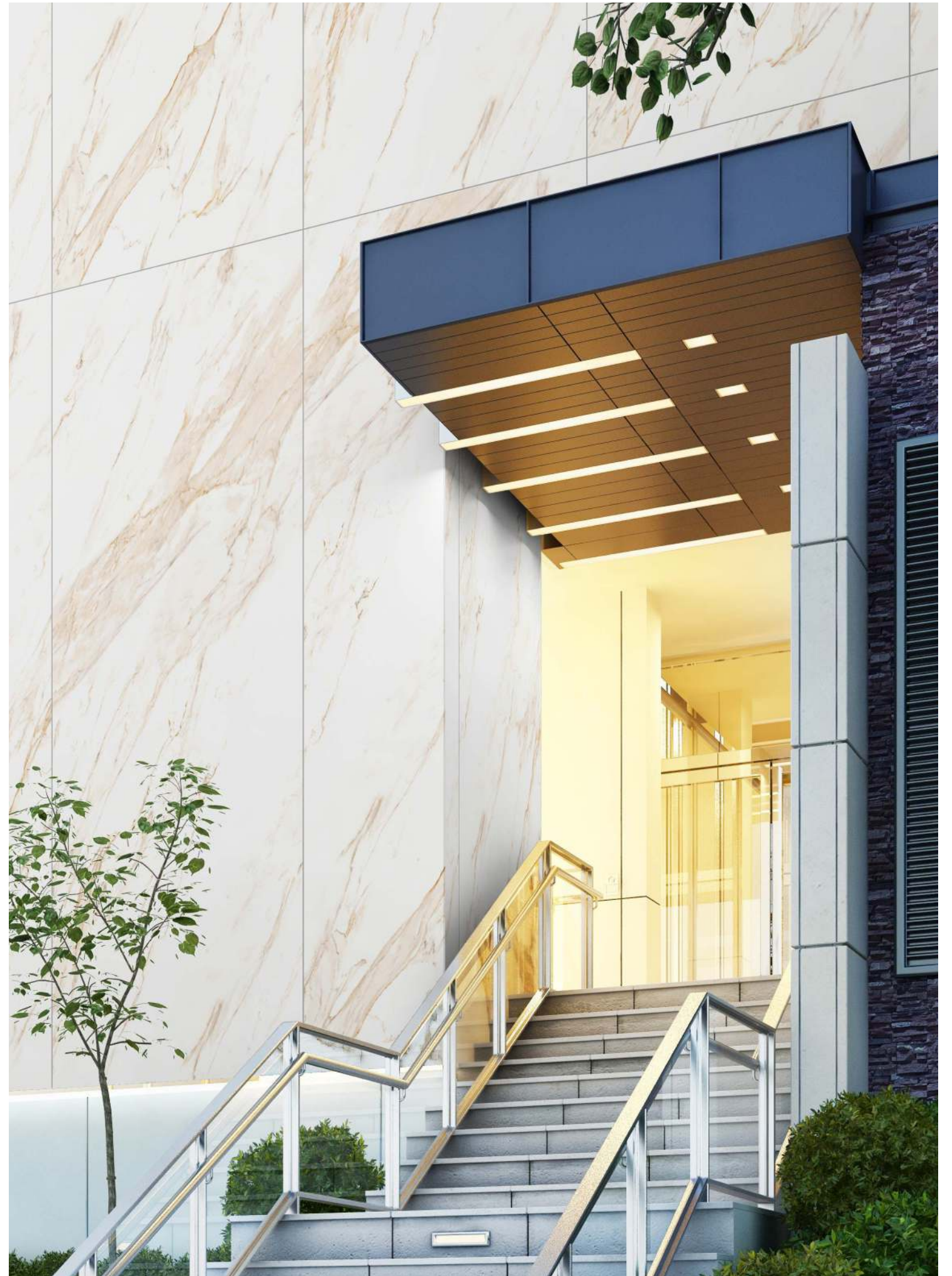
Thickness
05mm
Approx

**SURFACE
MATT**

PRODUCT USED

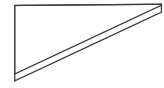


Calacutta Borgini
100x300cm





PROLAM



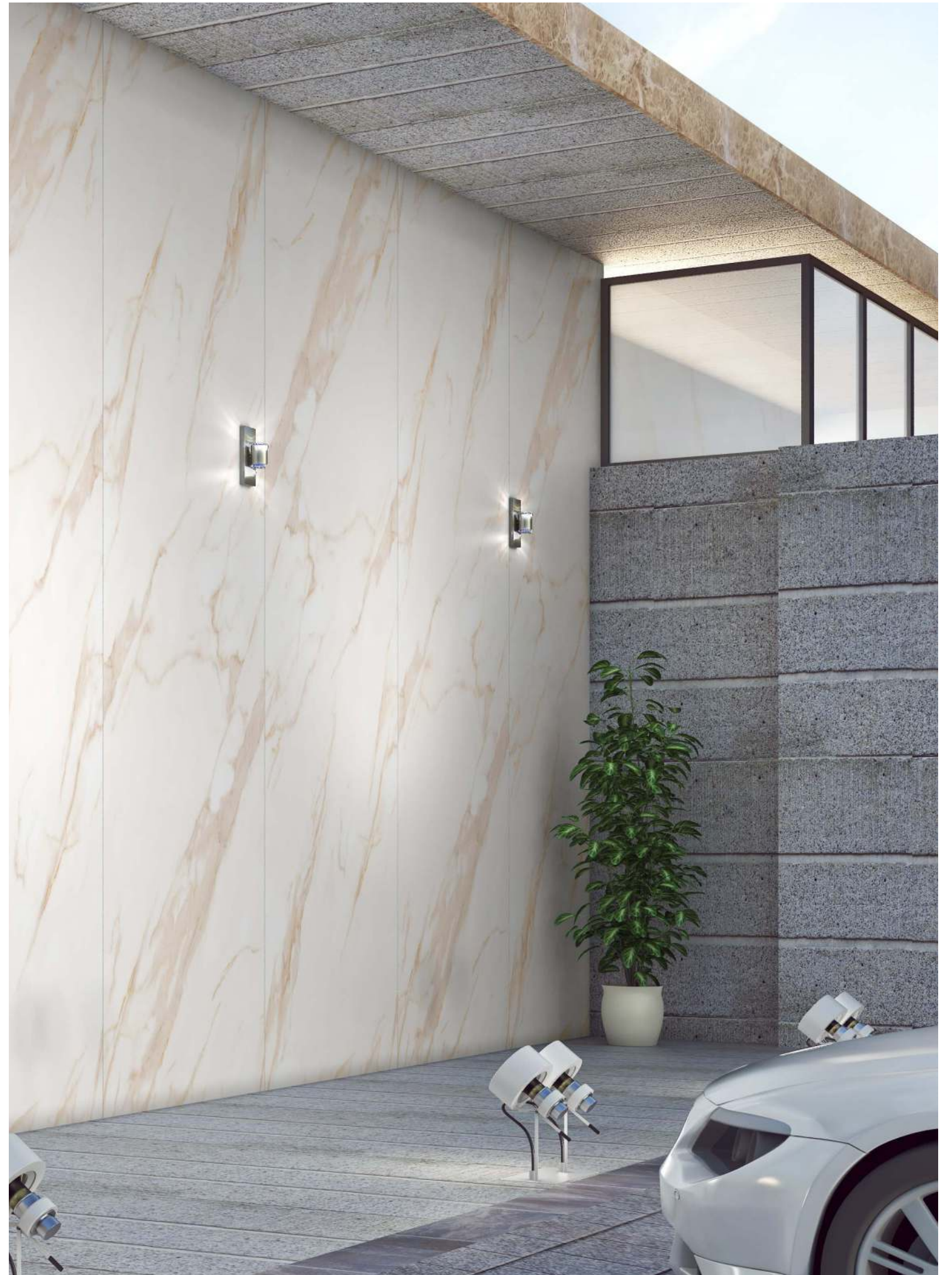
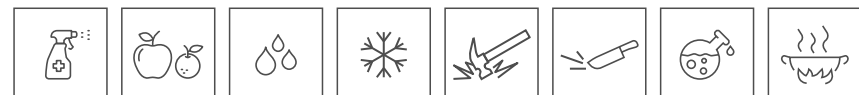
Thickness
05mm
Approx

SURFACE
MATT

PRODUCT USED



Starlight
100x300cm







Series : Marbles

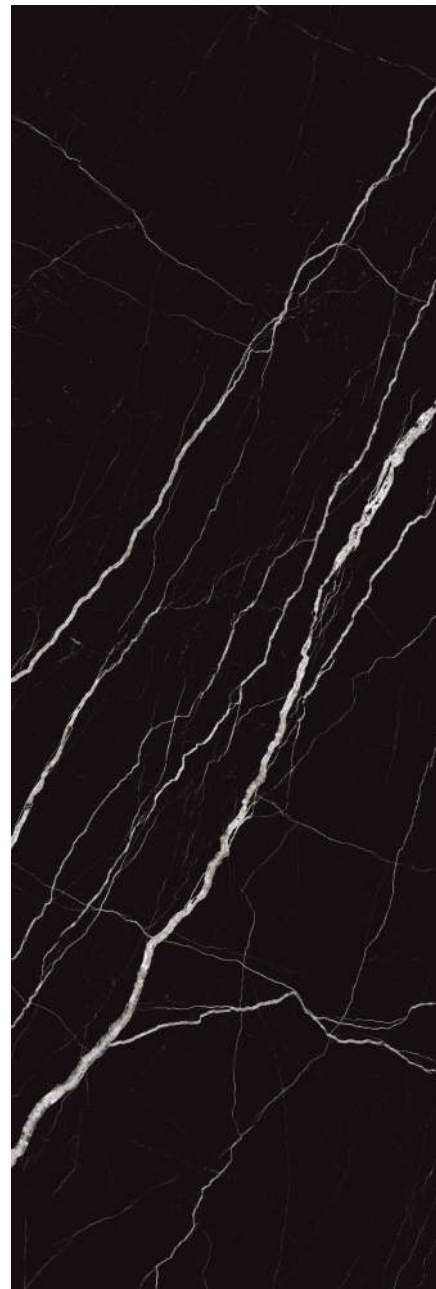
60x120cm |100x300cm

Digital Technology

HD Printing Quality



Midnight Black

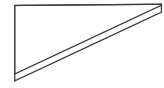


Marble Dark



Marble Grey

PROLAM



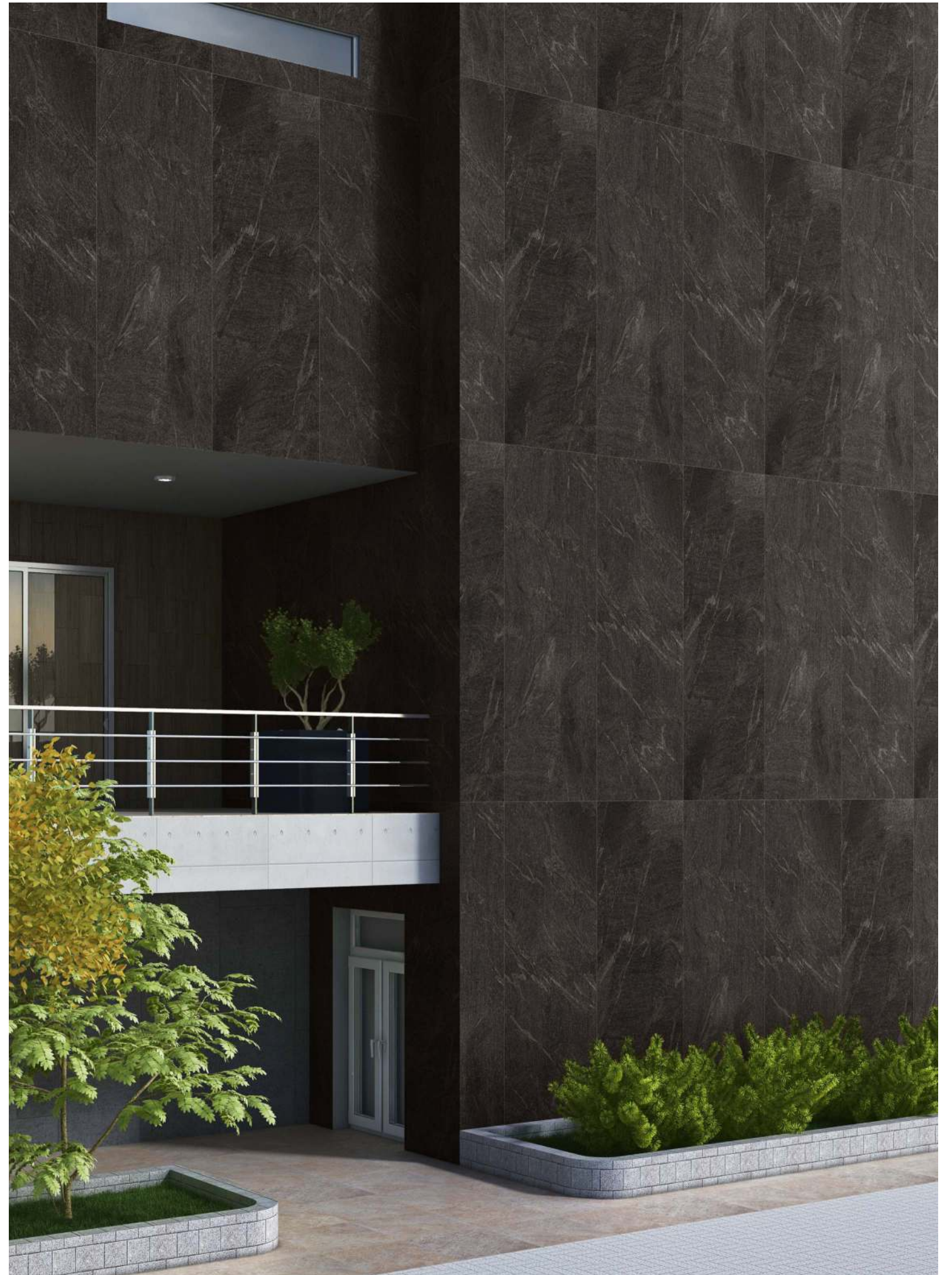
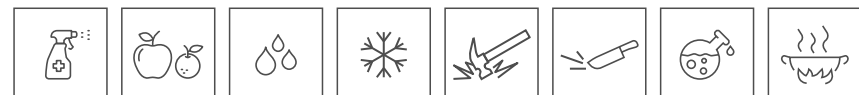
Thickness
05mm
Approx

SURFACE
MATT

PRODUCT USED

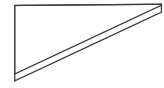


Salte Nero
100x300cm





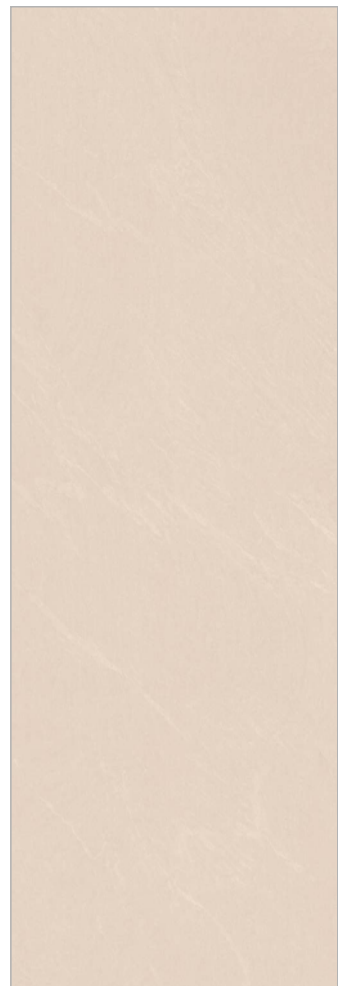
PROLAM



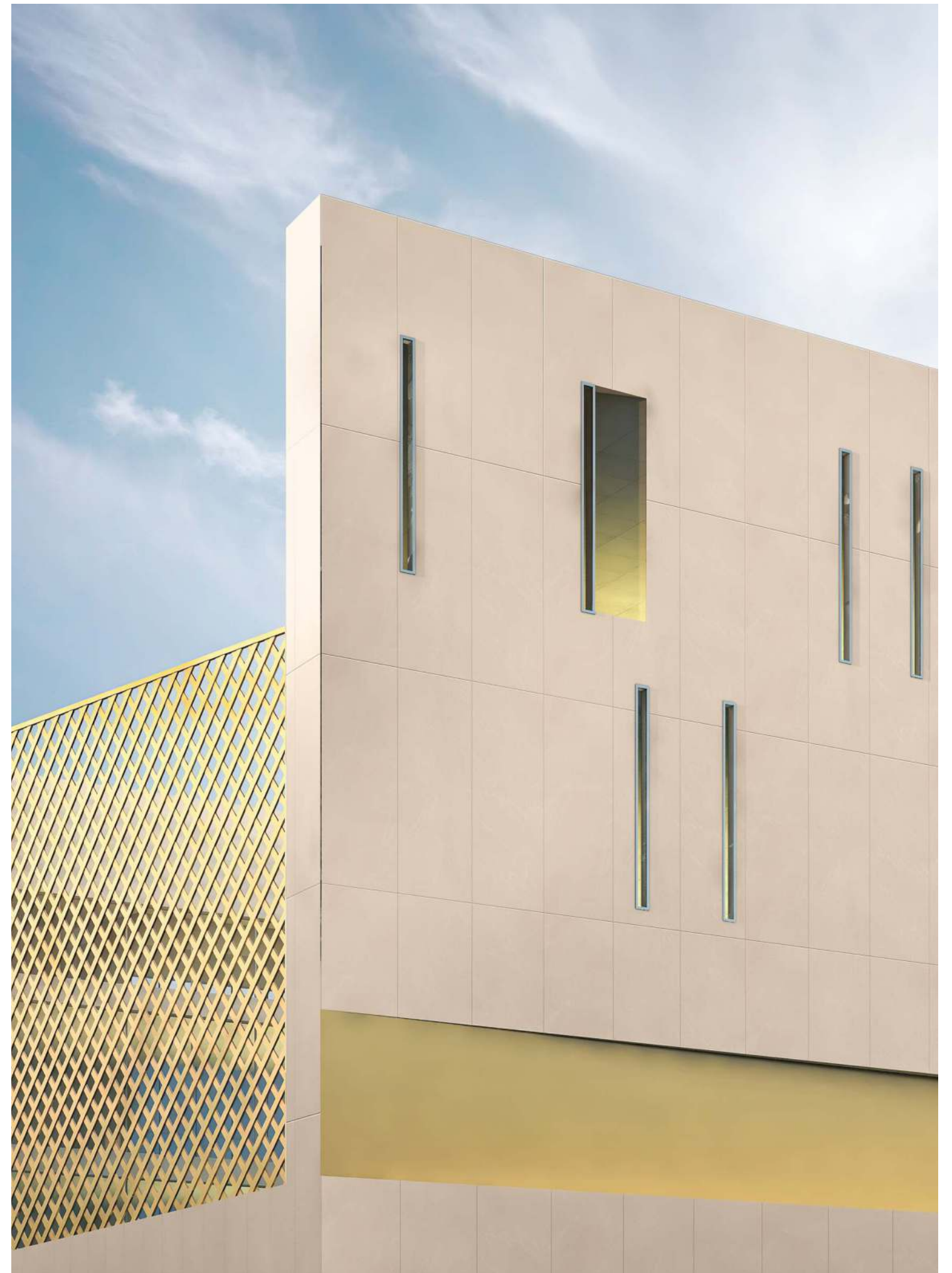
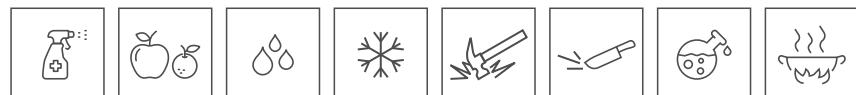
Thickness
05mm
Approx

SURFACE
MATT

PRODUCT USED

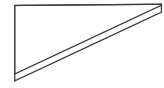


Salte Beige
100x300cm





PROLAM



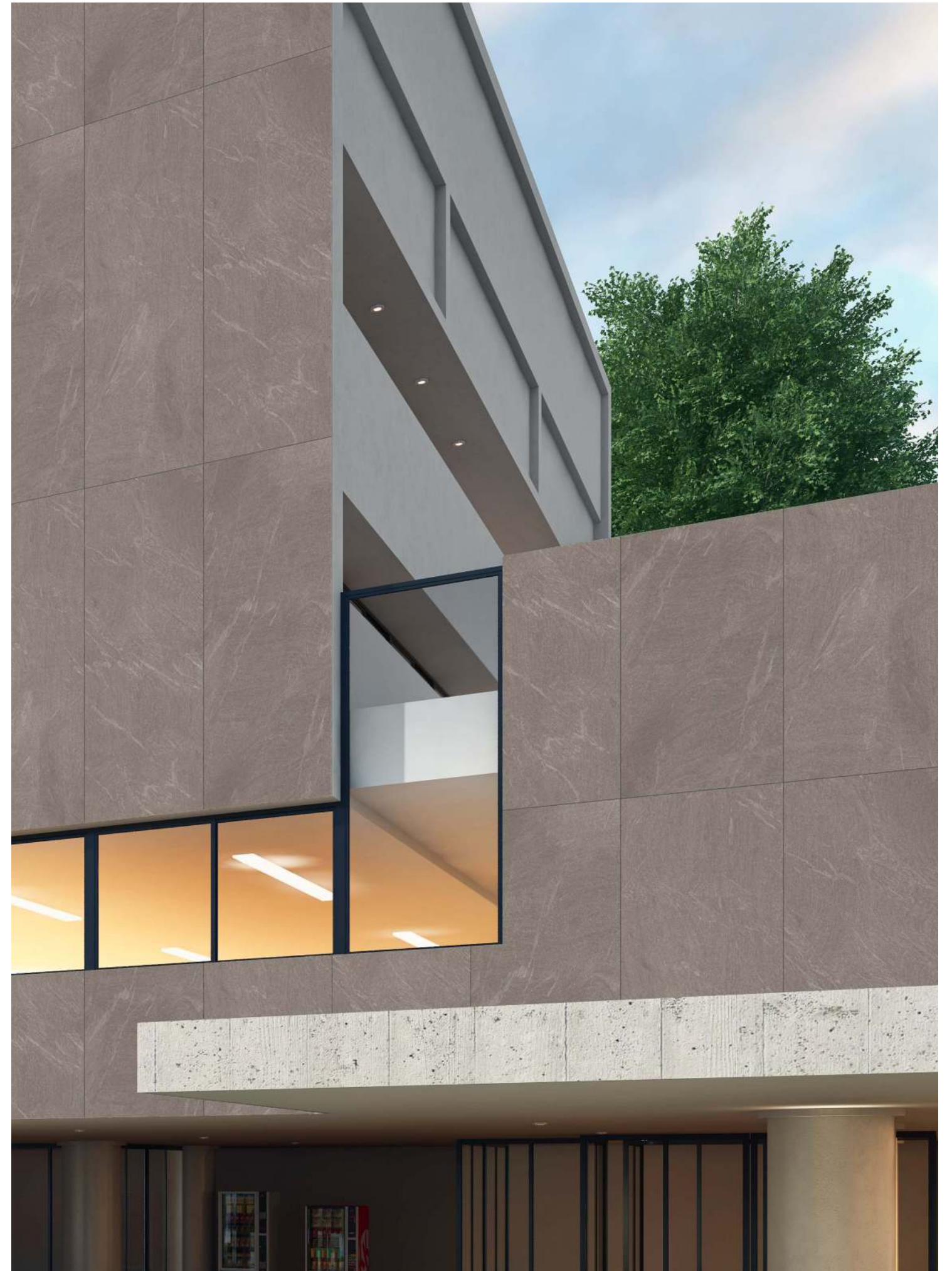
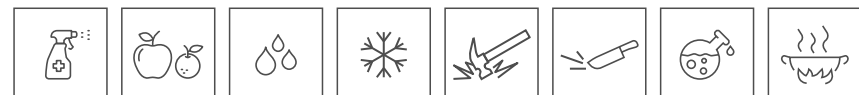
Thickness
05mm
Approx

SURFACE
MATT

PRODUCT USED



Salte Grigio
100x300cm



Business Hub





Series : Salte

60x120cm |100x300cm

Digital Technology

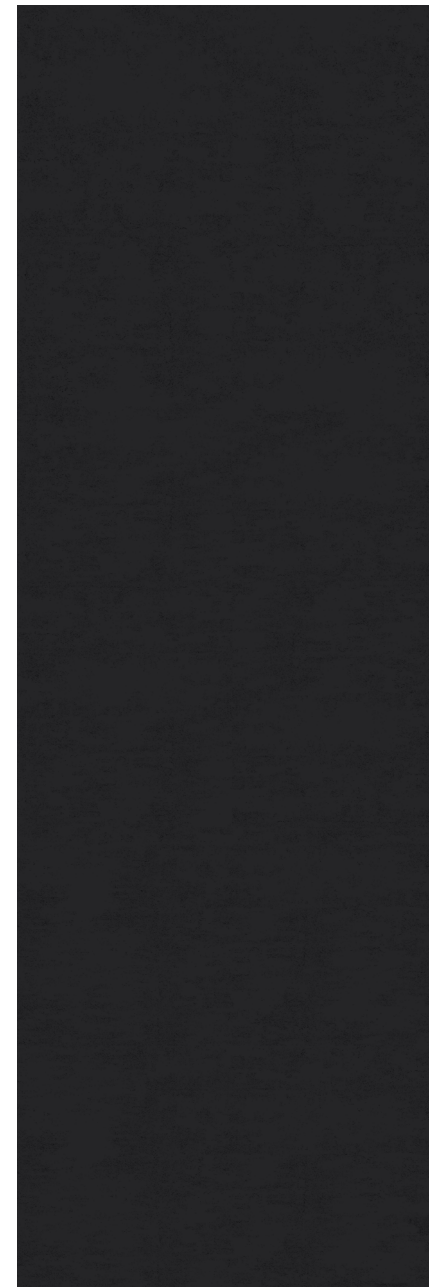
HD Printing Quality



Salte Natural



Natural Stone
Antracide



Nero Blend



Series : Cemento

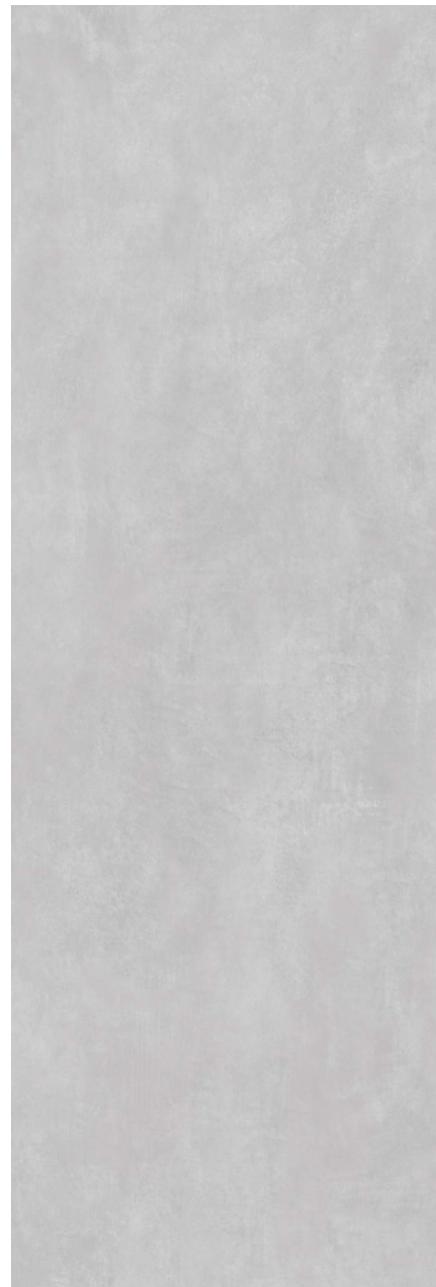
60x120cm |100x300cm

Digital Technology

HD Printing Quality



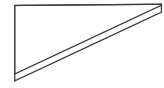
Cemento Taupe



Cemento Grey



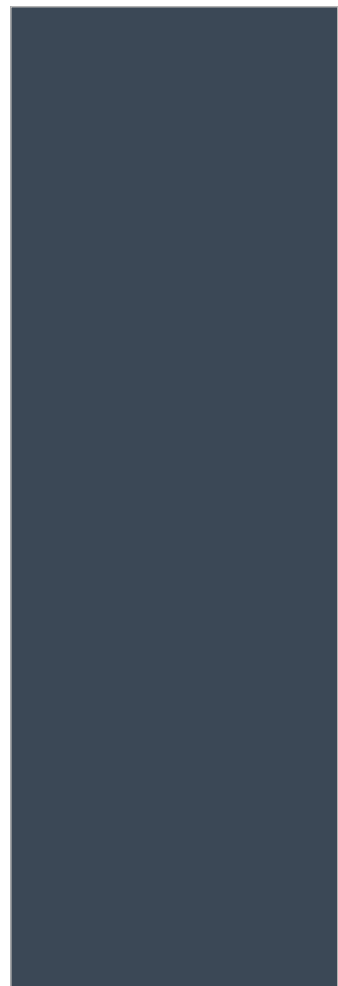
PROLAM



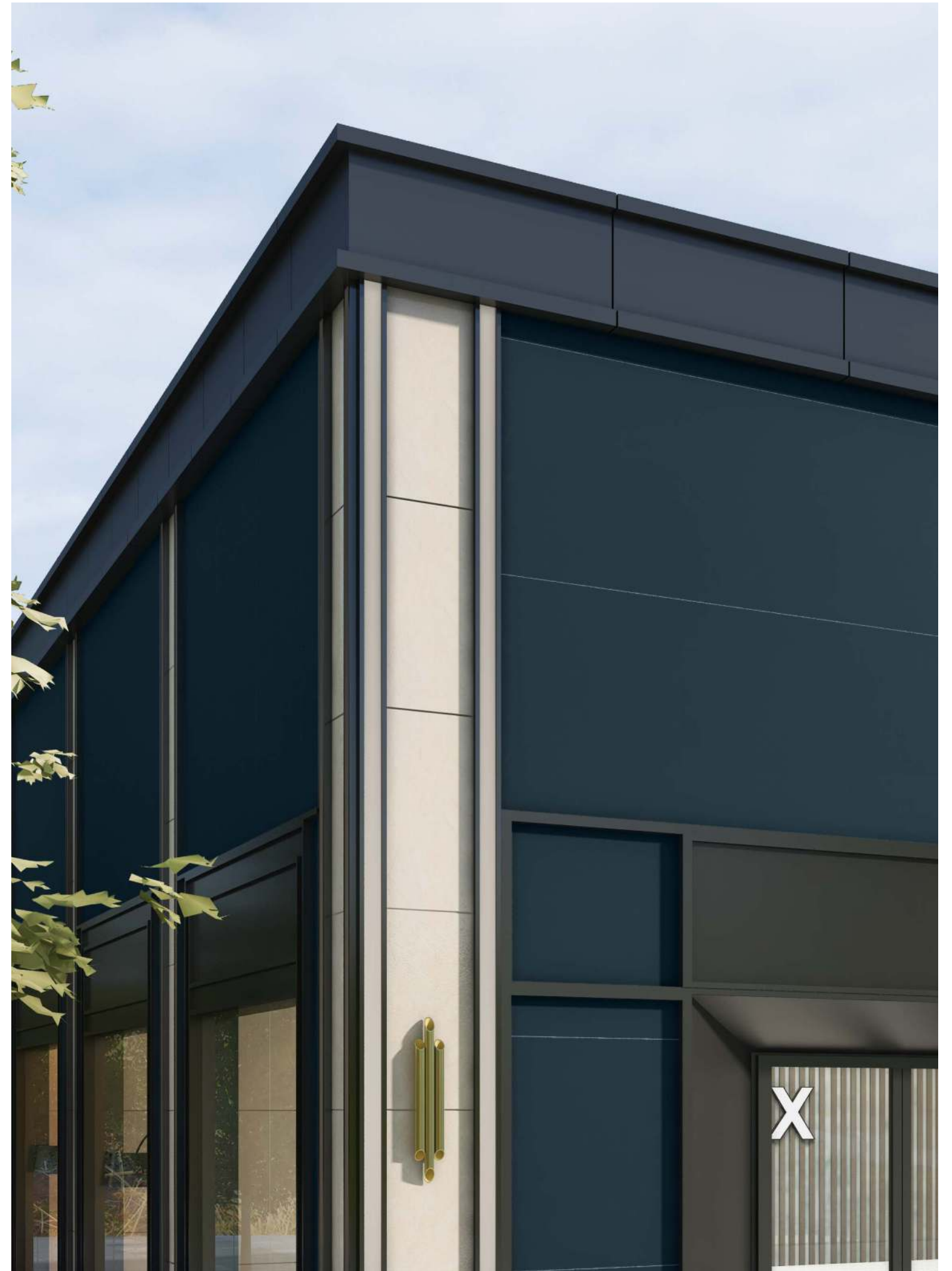
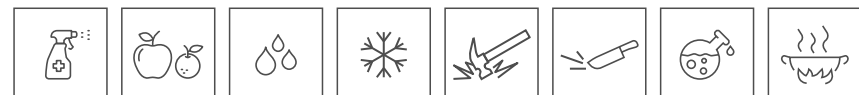
Thickness
05mm
Approx

SURFACE
MATT

PRODUCT USED

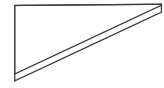


Dark Cobalt Blue
100x300cm | | 60x120cm





PROLAM



Thickness
05mm
Approx

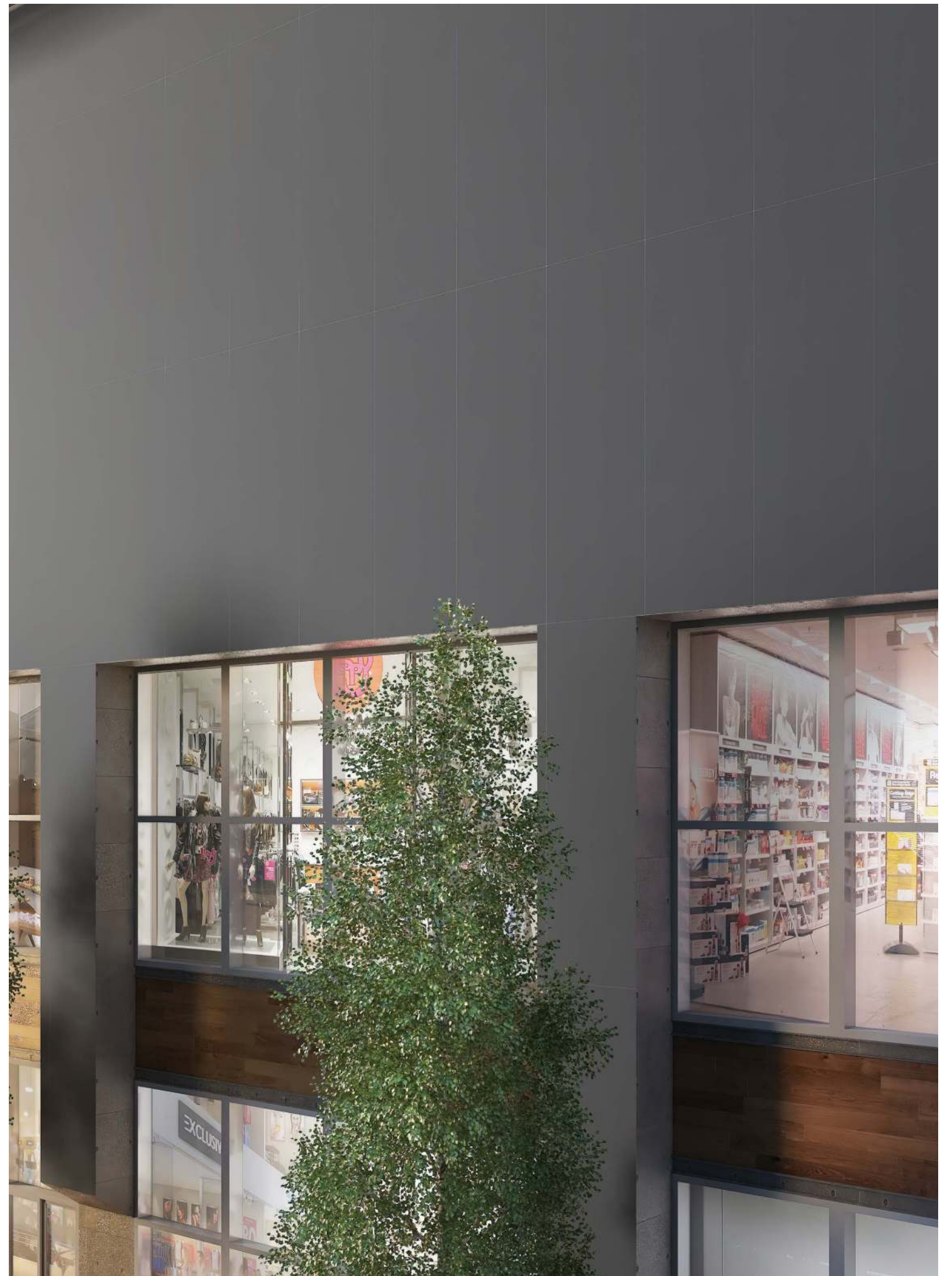
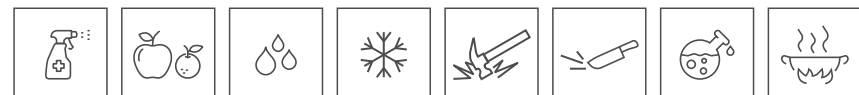
SURFACE
MATT

PRODUCT USED



Dark Grey

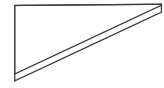
100x300cm || 60x120cm



 CINEMAX



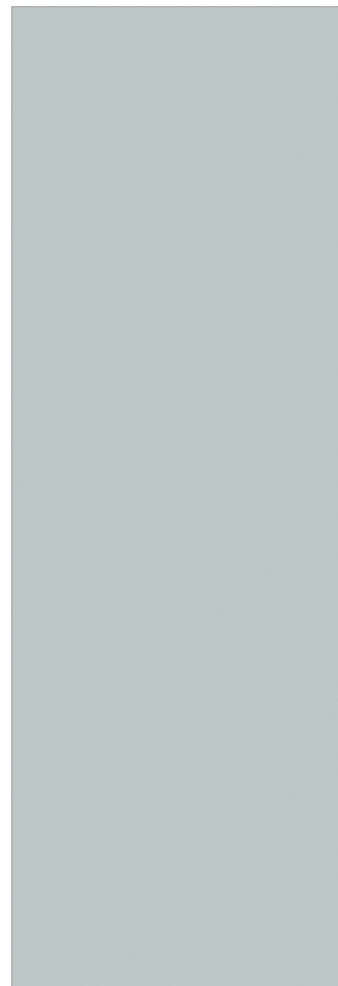
PROLAM



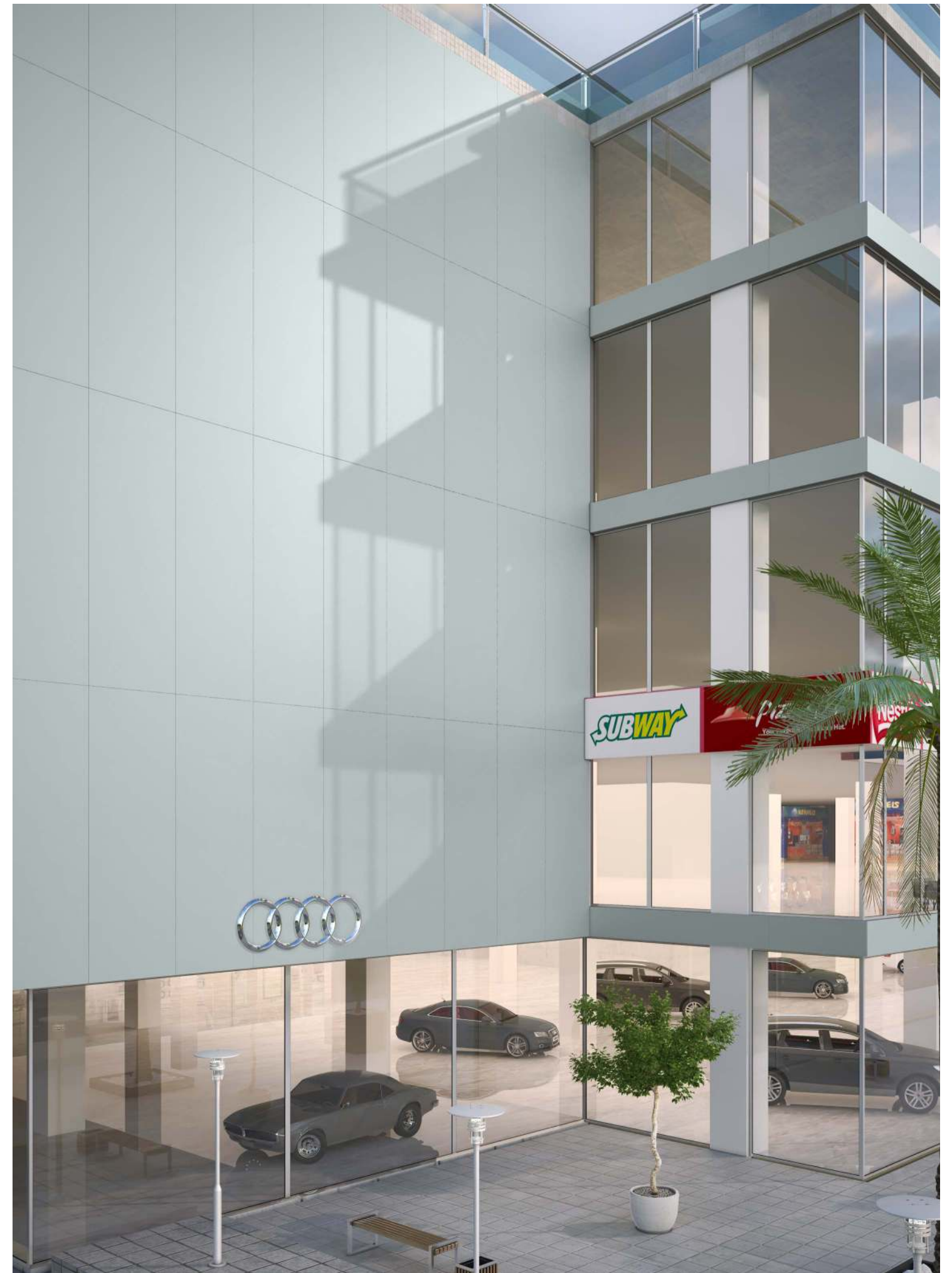
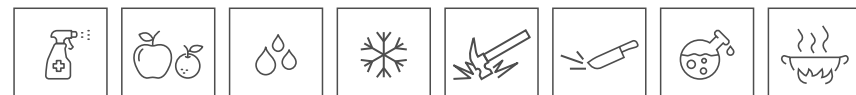
Thickness
05mm
Approx

SURFACE
MATT

PRODUCT USED

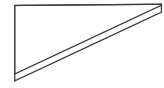


Sky
100x300cm || 60x120cm





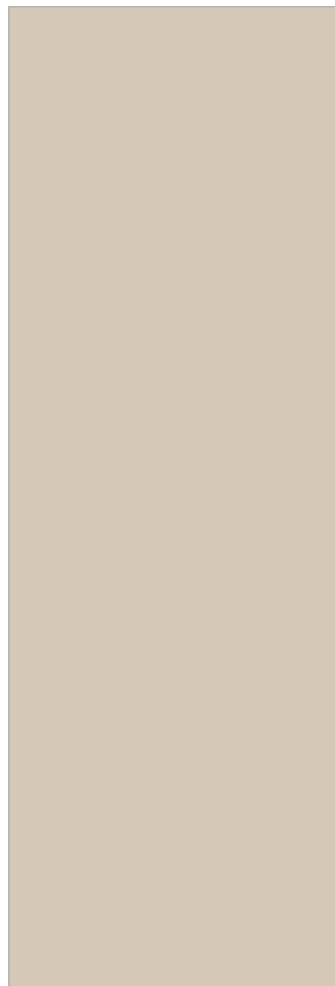
PROLAM



Thickness
05mm
Approx

SURFACE
MATT

PRODUCT USED



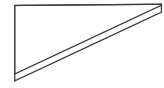
Warm

100x300cm | | 60x120cm





PROLAM



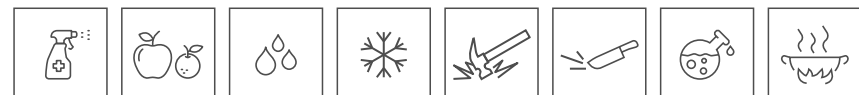
Thickness
05mm
Approx

SURFACE
MATT

PRODUCT USED

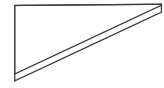


Lignin Black
100x300cm | 60x120cm





PROLAM



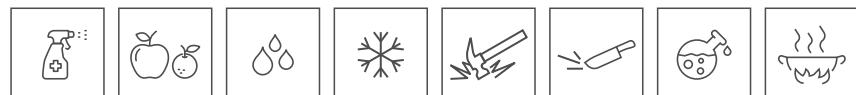
Thickness
05mm
Approx

SURFACE
MATT

PRODUCT USED

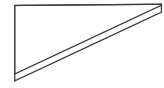


Golden Brown
100x300cm | | 60x120cm





PROLAM



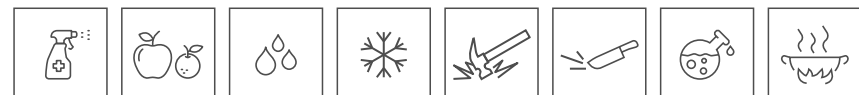
Thickness
05mm
Approx

**SURFACE
MATT**

PRODUCT USED

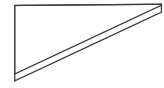


Silver Spring
100x300cm | 60x120cm





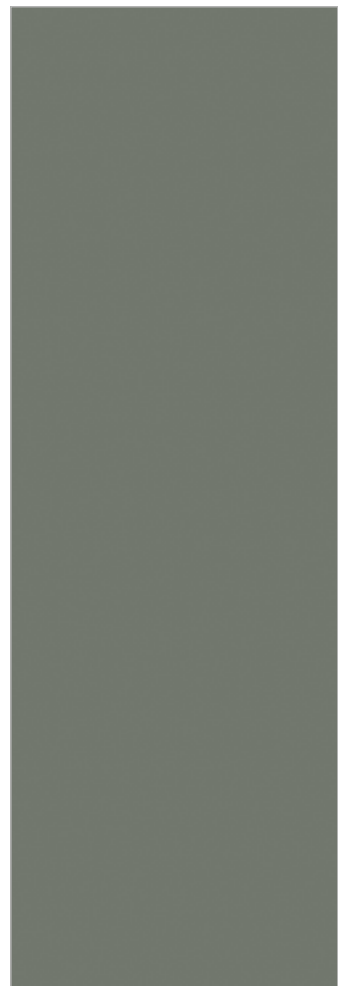
PROLAM



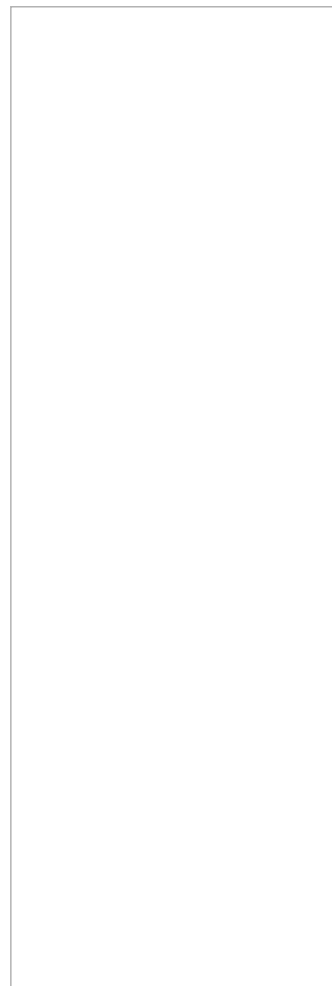
Thickness
05mm
Approx

**SURFACE
MATT**

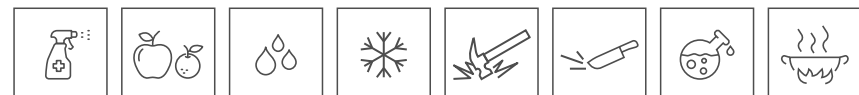
PRODUCT USED



Reed Green
100x300cm | 60x120cm

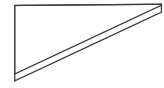


Plain White
100x300cm | 60x120cm





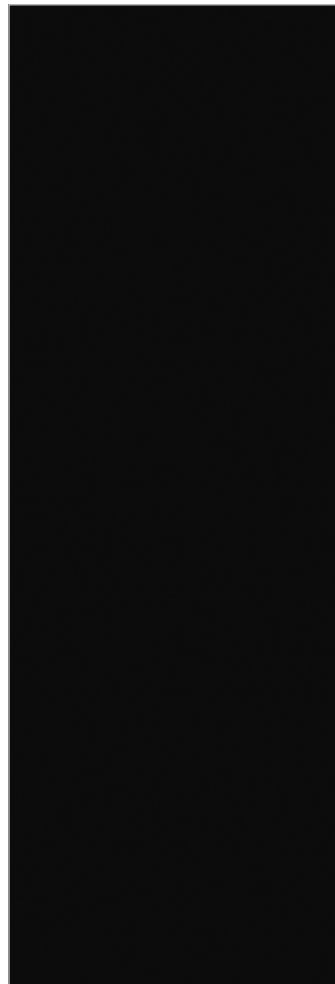
PROLAM



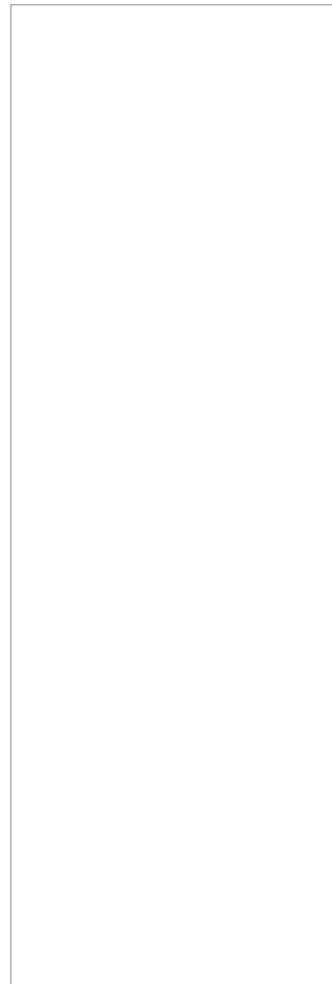
Thickness
05mm
Approx

SURFACE
MATT

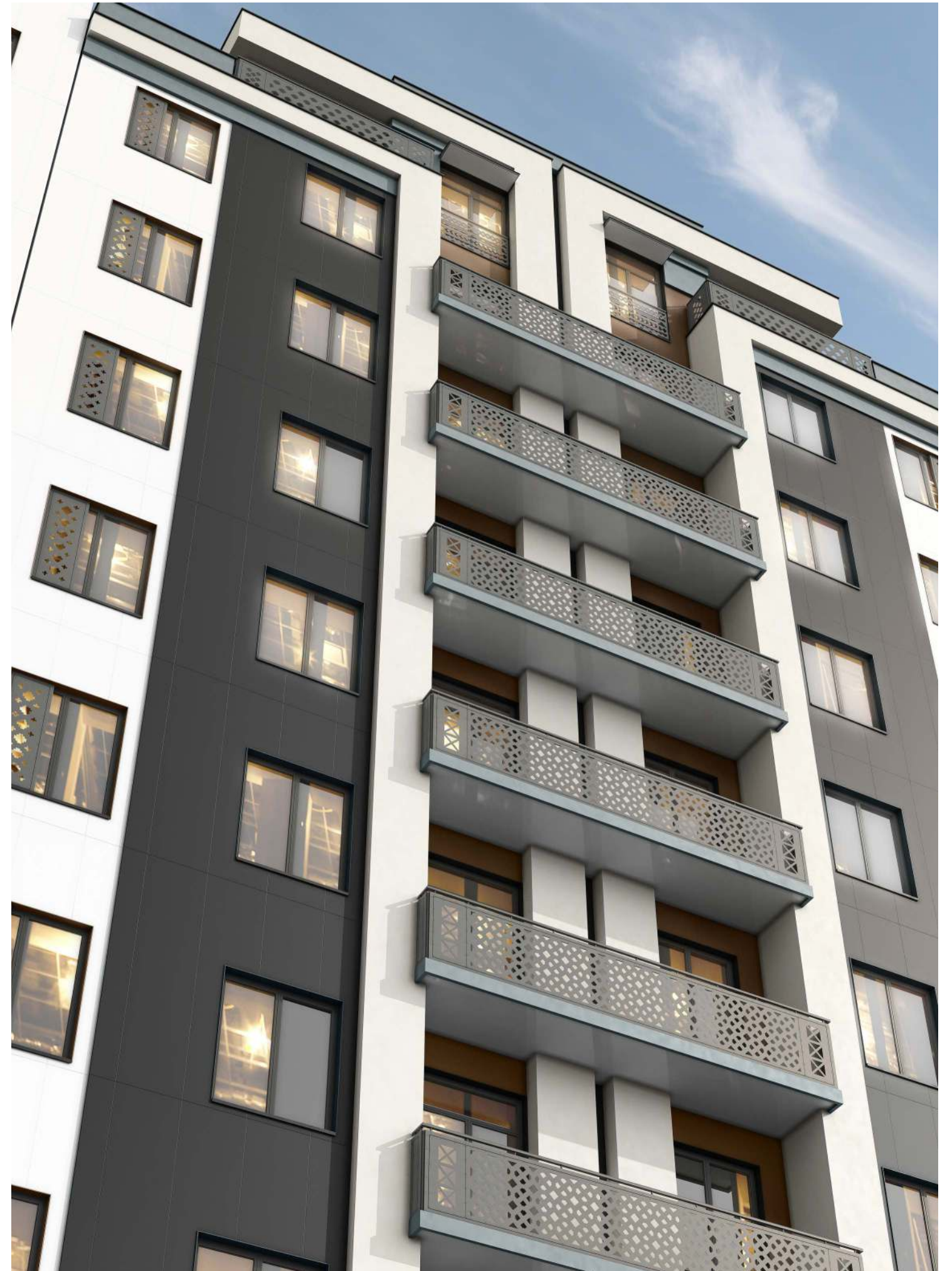
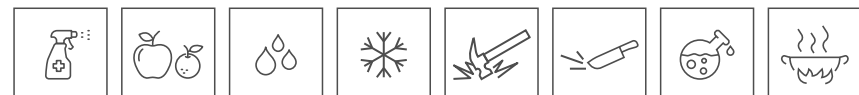
PRODUCT USED



Black
100x300cm | 60x120cm

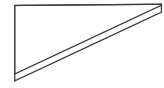


White
100x300cm | 60x120cm





PROLAM



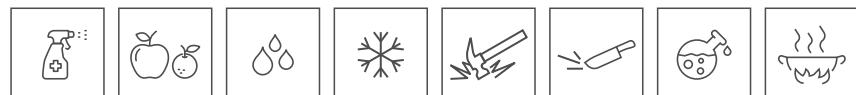
Thickness
05mm
Approx

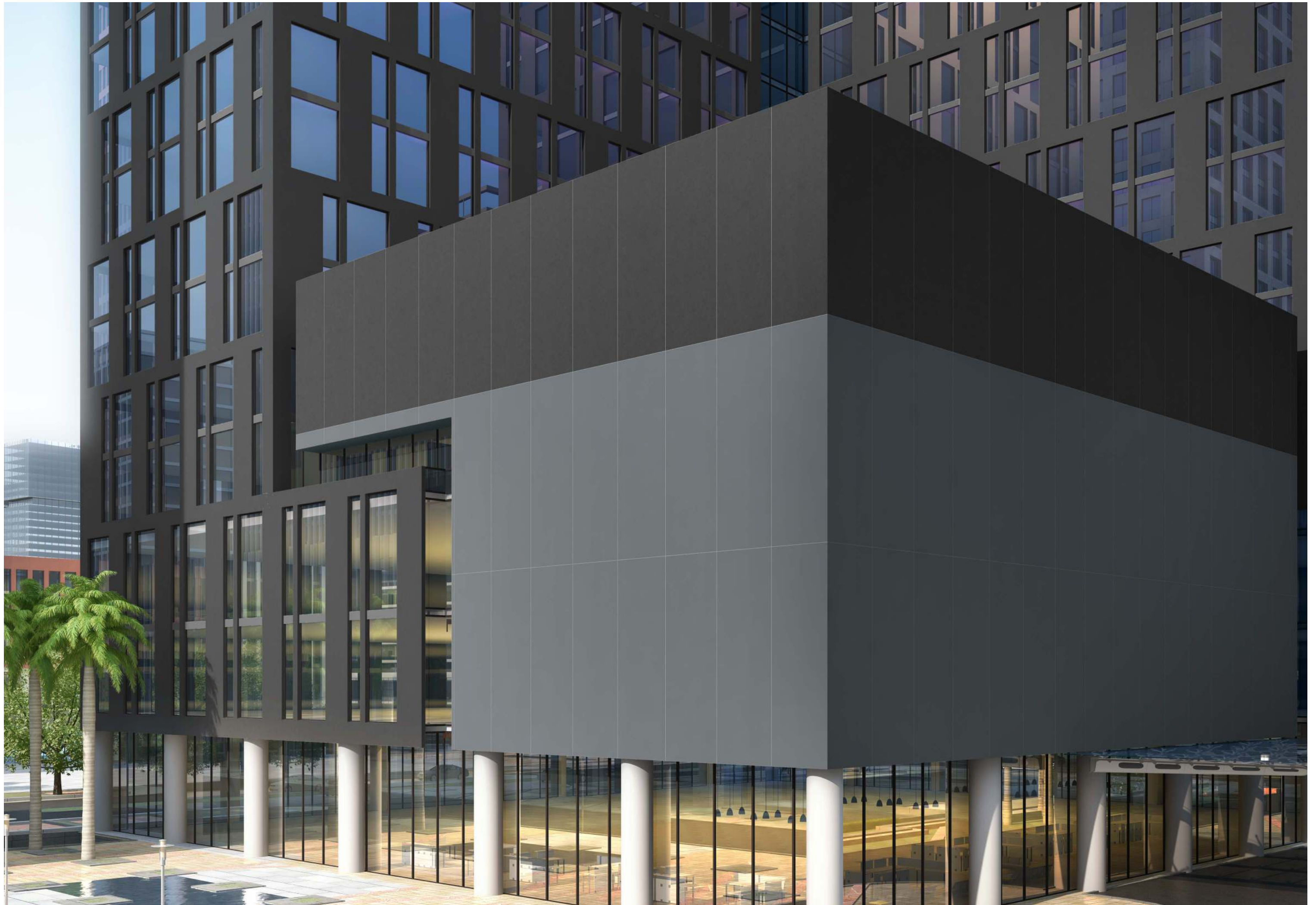
SURFACE
MATT

PRODUCT USED

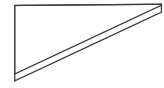


Sandune Black
100x300cm | | 60x120cm





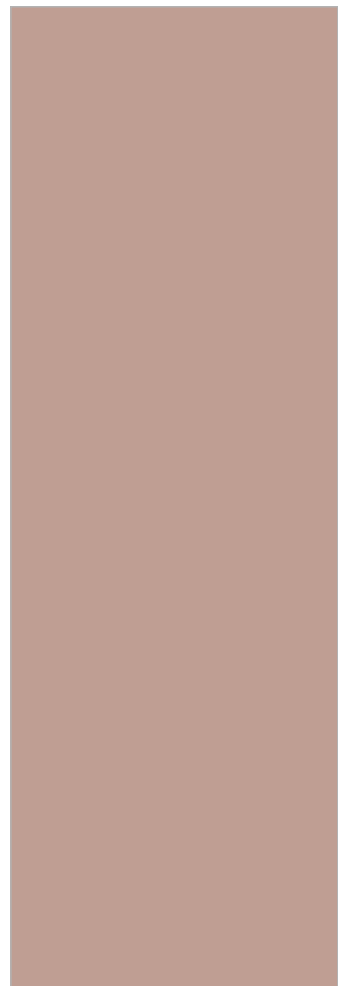
PROLAM



Thickness
05mm
Approx

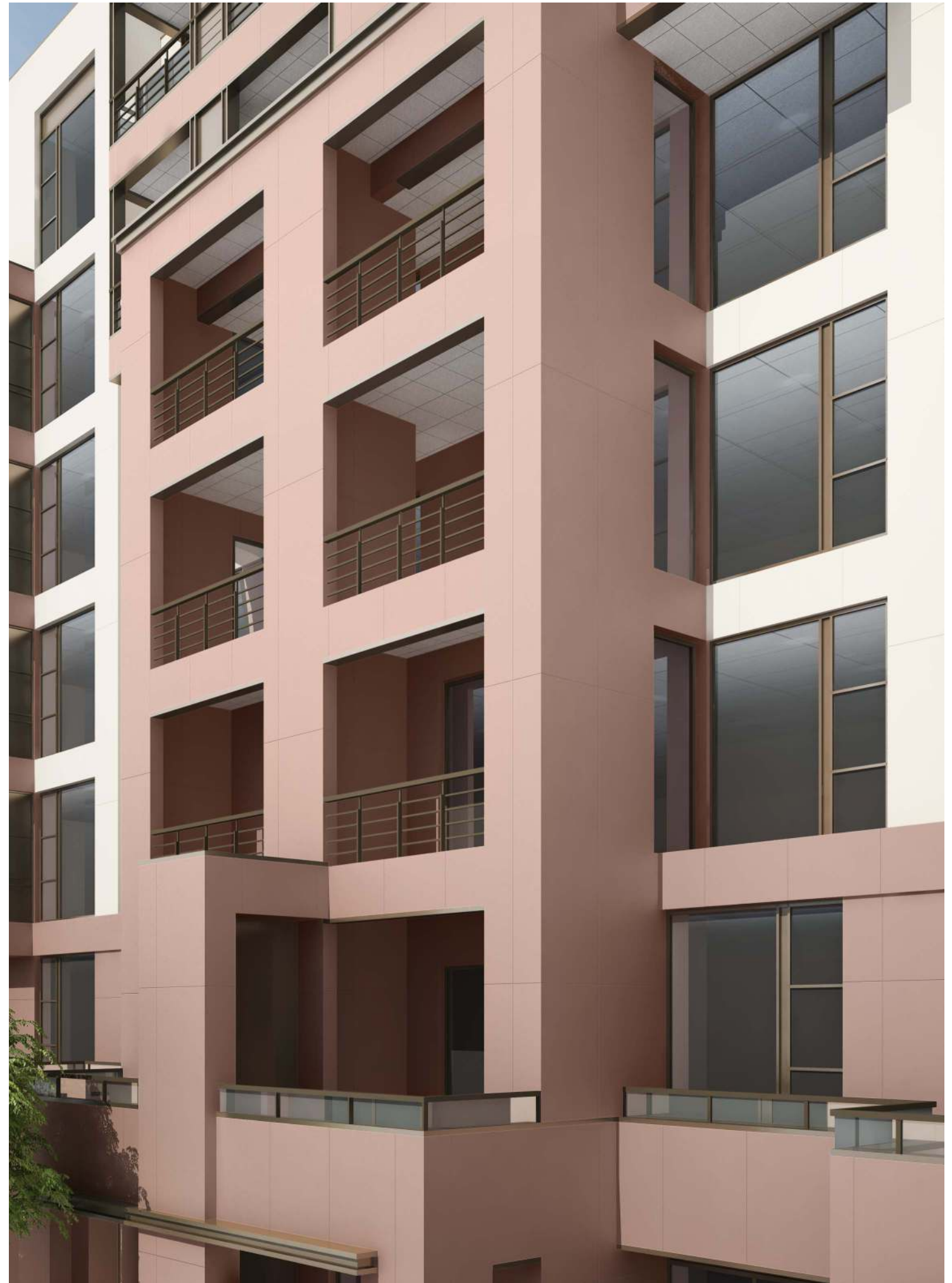
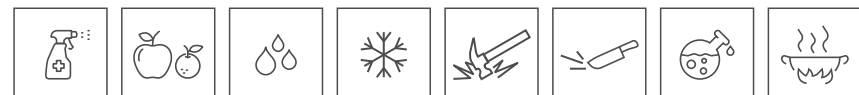
SURFACE
MATT

PRODUCT USED



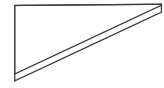
Soft Peach

100x300cm | | 60x120cm





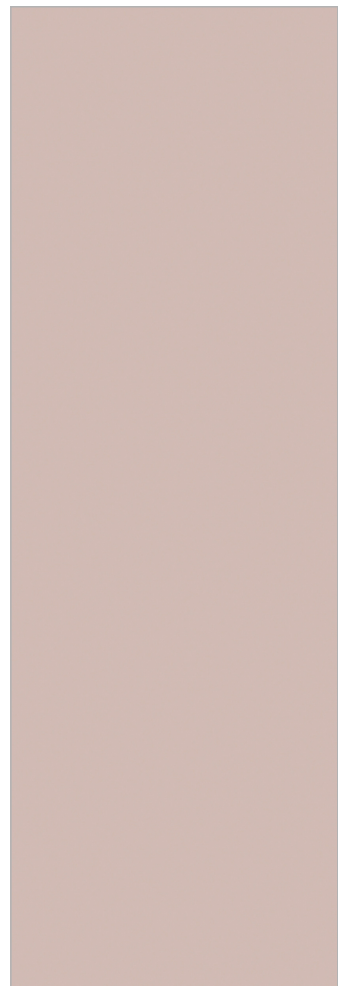
PROLAM



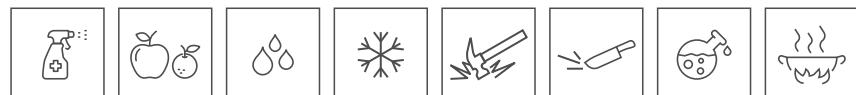
Thickness
05mm
Approx

SURFACE
MATT

PRODUCT USED

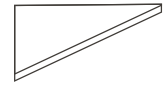


Peach
100x300cm | | 60x120cm





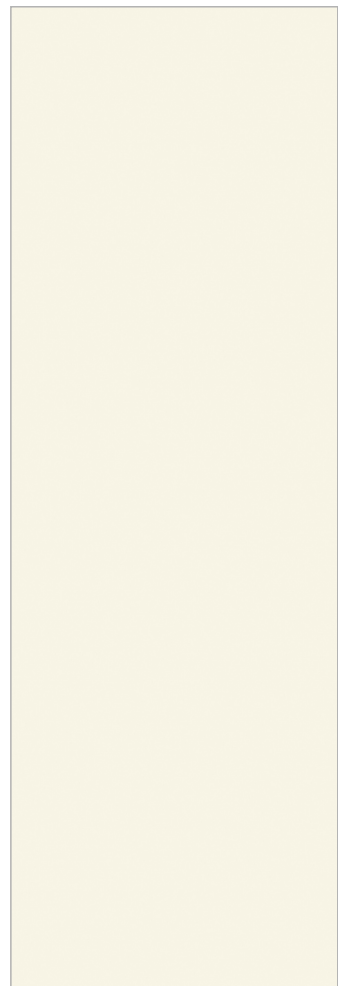
PROLAM



Thickness
05mm
Approx

**SURFACE
MATT**

PRODUCT USED



Ivory

100x300cm | | 60x120cm







Mexico

Germany

Türkiye

Kazakhstan

Uzbekistan

Kyrgizistan

India

Russia

PROLAM

HEAD OFFICE :

Yenisehir MAH. Sümbül SK.
Ekinci Residence - N: 8 /1 - iç Kapı N:504
Pendik / istanbul Elvira.
elvirasoysal@gmail.com | +90 535 041 49 20

KAZAKHSTAN

Bostandyksky District 050060-
Khodzhanov St. 76 Almaty / Republic
of Kazakhstan Alexey Ilushenko.
a.ilushenko@invescoasia.kz | +7 702 203 3111

INDIA

1 Modern Complex Udaipur
Bhuvana (Rajasthan) 310001 - India.
Shalu Kumar Singh
+91 97833 05302 | +91 97833 04302